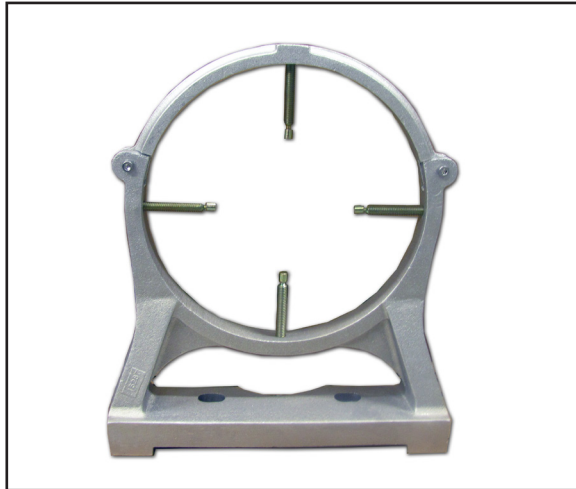


Beamline Support Assemblies



APPLICATIONS

The NEC beamline support assembly is used wherever support and accurate adjustment is required for beamline tubing.

These assemblies have been in use for many years on the standard Pelletron® accelerator systems throughout the world. They have allowed precise adjustment while providing secure support.

DESIGN

The beamline support assembly is a cast aluminum structure with four adjustment screws. The top third of the support ring is removable.

The beamline support assembly can support beam tubes with O.D as large as 9.0" and as low as 6.0". Adapters are available to accommodate beam tube diameters as low as 2.0". The adjustment is provided by four 3/8-16 x 3" long screws with swivel pads on one end. Adjustment is made using a standard allen wrench.

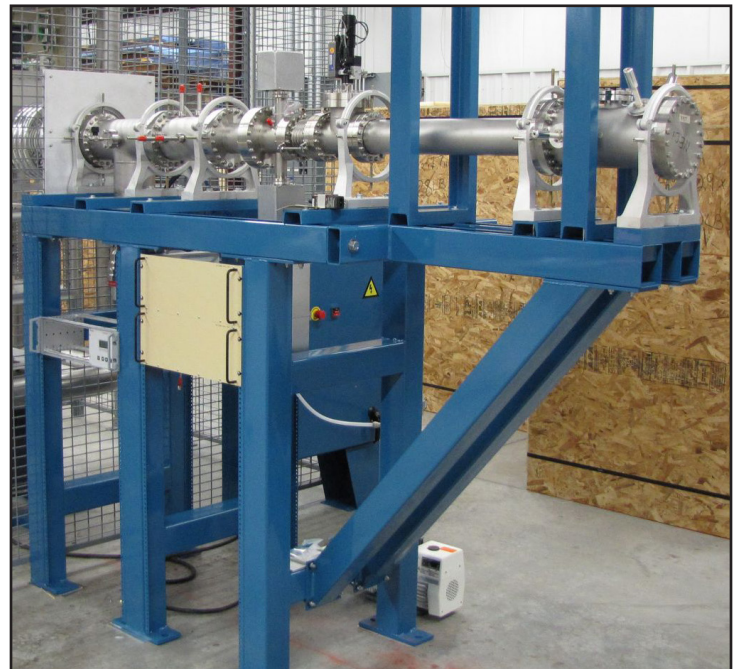
The base of the cast aluminum assembly has bolt holes that allow it to be secured to a beamline support frame.

OPTIONS

For beam tube diameters 4.0" or less, insert adapters are available that clamp directly to the pipe and are supported from the adjustment screws in the beamline support assembly. These adapters allow secure support without overextension of the adjustment screws.

ACCESSORIES

NEC can also supply beamline support frames, beam tubing, and a wide variety of flange assemblies built to your custom specifications.

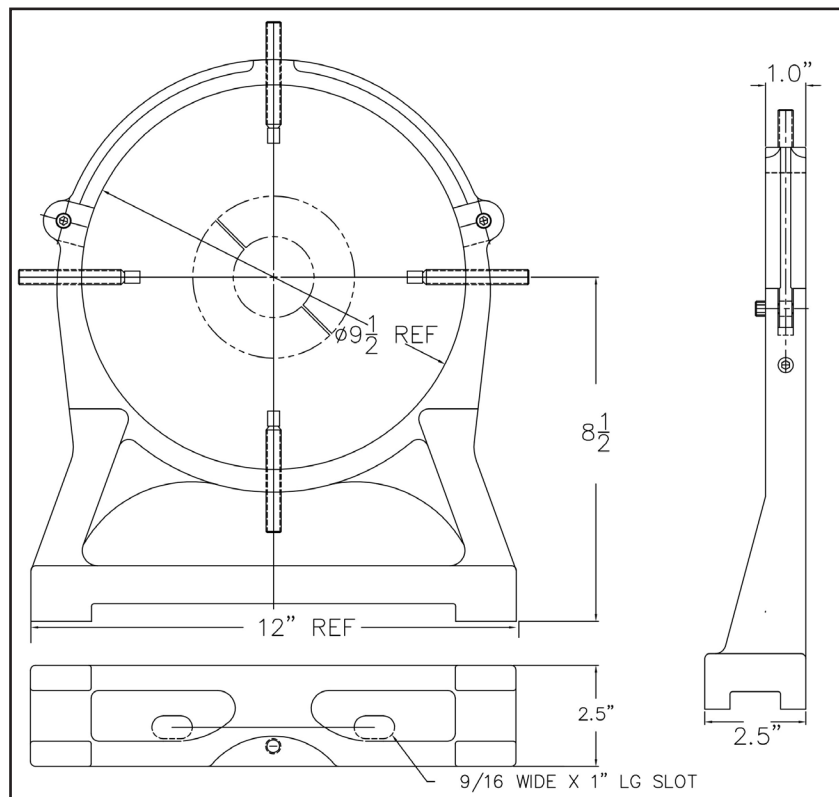


[Beamline Support v2]

Beamline Support Assemblies

SPECIFICATIONS

Material:	Cast aluminum
Adjustment:	4 screws with swivel pads, 0.375x16, 3.0" Lg
Maximum Pipe O.D.:	9.0" nominal
Maximum Design Load:	300lbs
Available Adapters:	2AD004450 beam tube support adapter, 4.0" bore x 6.0" OD 2AD004451 beam tube support adapter, 3.0" bore x 6.0" OD 2AD004452 beam tube support adapter, 2.0" bore x 6.0" OD



ORDERING INFORMATION

Catalog No.: **2AA003470 9.5" Beamline Support Assembly**
Shipping weight: 10 lbs. (4.5 kg)
F.O.B. Middleton, Wisconsin U.S.A.



[Beamline Support v2]

7540 Graber Rd., P.O. Box 620310, Middleton, WI 53562-0310 USA

TELEPHONE: 608-831-7600 ♦ FAX: 608-831-9591 ♦ E-MAIL: nec@pelletron.com ♦ WEB-SITE: <http://www.pelletron.com>